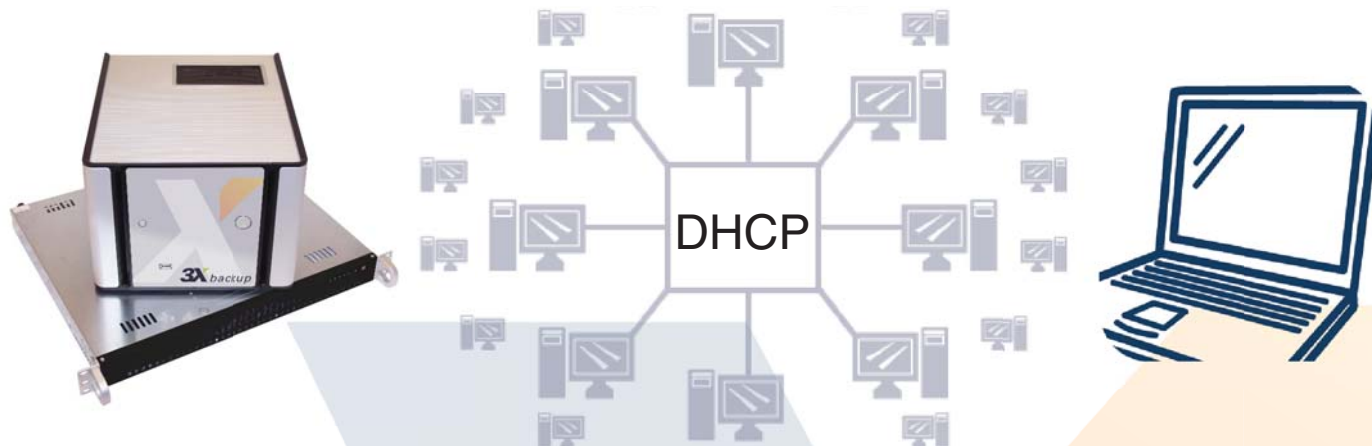
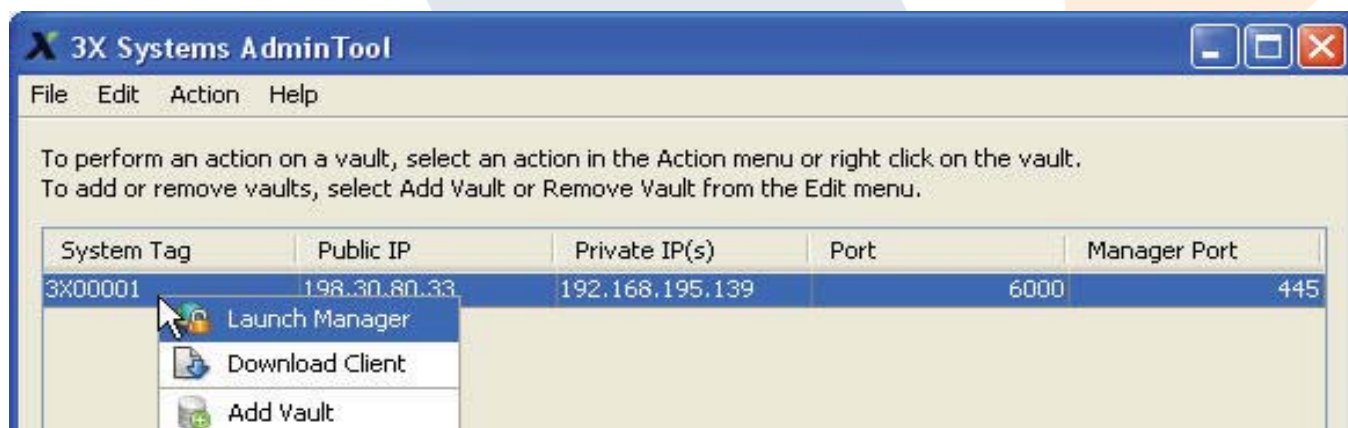


Quick Start Guide

1. Attach 3X Remote Backup Appliance (RBA) and a PC to the same DHCP-enabled network. **DO NOT USE A CROSSOVER CABLE. DO NOT CONNECT A MONITOR** Contact 3X Support at 866.478.3131 if you are configuring the appliance on a network without a DHCP. Turn the appliance on.



2. Plug the 3X RBA flash drive into your PC and start the AdminTool. If your appliance has been started and is on the same DHCP network, it should appear in your list. Right click on this system and select “Launch Manager”



3. You should now see the Appliance Configuration Wizard.

Don't Forget:

- > You must forward port 5543 (or your alternative) through your firewall to allow an external PC to backup to the RBA.
- > You must forward port 443 (or your alternative) through your firewall to access the remote management console from an external PC.

**IF YOU HAVE ANY PROBLEMS
CALL 3X SUPPORT AT 866.478.3131**